

# The Squam Lake Loon Initiative



## Mid-Season Report

July 2023







# The Squam Lake Loon Initiative

## Mid-Season Report, July 2023

### *Executive Summary*

Between 2005-2007, Squam Lake experienced an unprecedented decline of close to half of its adult loon population, followed by the near-complete reproductive failure of its remaining loons. The Loon Preservation Committee (LPC) launched its Squam Lake Loon Initiative to understand the causes of the declines in Squam's loon population and to restore a healthy population of loons to the lake.

Squam's loons are facing multiple co-occurring stressors that are common to loons throughout the state, including climate change, increased recreational activities, increased predator populations, and other threats. Contaminant burdens that were higher than on other lakes and elevated rates of lead tackle mortality have, in concert with these other stressors, apparently resulted in disruptions to loon social structure, survival, and breeding success.

In 2022, Squam's adult loon population included fourteen territorial pairs, seven chicks hatched, and three chicks that fledged. No adult loons were documented to have died on Squam Lake in 2022. There are fourteen territorial pairs in 2023. To date, seven pairs have nested, four chicks have hatched between three families, there is one nest still active, and three nests have failed. Long-term average productivity on Squam remains well below historic levels.

The identification of elevated contaminant levels in unhatched Squam loon eggs collected from failed nests has driven LPC's work to monitor contaminants in loon eggs and to identify sources of contaminants in the Squam watershed. LPC submitted three inviable loon eggs from failed nests from the 2021-2022 breeding season for contaminant testing. We are still awaiting receipt of the results due to delays at the laboratory. Overall contaminant levels since the early 1990s are gradually declining, although, in recent years, levels of DDE (a breakdown product of DDT) and chlordane (an insecticide) are stable but not decreasing. LPC submitted a report on egg contaminant results to New Hampshire Department of Environmental Services (NHDES) and New Hampshire Department of Fish and Game and is preparing a paper for submission to a peer-reviewed journal.

Sediment sampling conducted by LPC as part of our efforts to identify sources of contaminants pinpointed three sites of contaminated sediments. Levels of contaminants at these locations were above levels identified as being possibly or likely harmful to aquatic life. LPC presented these data in a report on sediment contaminant concentrations to NHDES. As a follow up to LPC's findings, DES tested fish from Squam and issued a more stringent fish consumption guideline due to elevated PCBs in the fish, which remains in effect.

LPC's work to understand and reverse the decline of loons on Squam has ensured that issues affecting the health of loons and other wildlife are addressed to safeguard Squam and all its inhabitants. LPC will continue to work to recover Squam Lake's loon population through intensive research, monitoring, management, and outreach as part of its Squam Lake Loon Initiative. This work will continue to inform LPC's conservation efforts for loons on Squam and throughout the state.

## ***Background***

Between the fall of 2004 and the spring of 2005, Squam Lake lost seven of its loon pairs. The decline from 16 to 9 pairs represented 44% of Squam's loon population, a drop unprecedented on Squam or any other large lake in LPC's 46-year history of monitoring loons throughout New Hampshire. It also brought Squam's loon population to its lowest level since LPC began to survey Squam Lake in 1975. This decline was followed by the near-complete reproductive failure of the remaining loon population. In 2007, only three chicks were hatched on Squam and only one survived to late August and was presumed to have fledged. Loons on Squam had not experienced a reproductive failure of this magnitude since 1978, the year LPC petitioned successfully to have loons added to the Threatened Species list in New Hampshire.

The Squam Lake Loon Initiative is LPC's response to the decline of Squam's loon population. The Initiative began in 2007 and includes an intensive monitoring, research, management, and outreach effort to:

1. Determine the overall survival and reproductive success of Squam's remaining loon population
2. Assess causes of nest failures and collect inviable eggs from failed nests for analysis of a wide range of contaminants
3. Rescue sick or injured loons to increase loon survival
4. Find and collect loon carcasses, determine causes of death, and test dead loons for contaminants and pathogens (disease-causing organisms)
5. Band loons to allow us to identify and track individual birds and collect blood and feather samples for analysis of contaminants, pathogens, and indicators of health
6. Determine survival and breeding success of previously banded and sampled loons, and relate survival and breeding success of individuals to their contaminant levels
7. Incorporate results into a systems dynamics model to provide an independent assessment of the factors influencing mortality and reproductive failure of loons on Squam Lake
8. Determine possible sources of contaminants and options for mitigation of these sources
9. Restore and maintain a healthy and stable population of loons on Squam Lake as a component of a healthy statewide population of loons.

## ***Squam's Loon Population and LPC's Management Activities in 2023***

Squam Lake's loon population in 2023 included fourteen pairs of loons, the same number as in 2022. Four chicks have hatched to date on Squam in 2023 and one nest is still active. By comparison, seven chicks hatched in 2022 and three of them fledged (Figure 1). Squam Lake had seven nesting pairs and nesting attempts in 2023—one fewer nesting pairs and two fewer nesting attempts than in 2022. There have been three nest failures to date on Squam in 2023. One nest was abandoned as a result of intruding loons and two nests were lost to predators.

The reproductive success of Squam's loon pairs in the decade before the 2005-2007 decline was far greater than in recent years (Figure 2). From 1995-2004, an average of 10.1 chicks hatched each year on Squam and an average of 6.6 chicks fledged. After the 2005-2007 decline, an average of only 5.7 chicks hatched each year and 3.1 fledged. This is a rate of 0.23 chicks surviving per territorial pair (CS/TP), less than half the statewide average and less than half the rate of 0.48 CS/TP needed to maintain a viable loon population. There has been an encouraging increase in the hatch rate over the past five years, a hopeful indication that LPC's efforts to protect nesting loons is paying off.

LPC carries out management activities to help increase the chances for successful hatching and chick survival. In 2023, LPC floated nine nesting rafts on Squam Lake and three of those rafts were used, producing three of the four chicks hatched to date on Squam. LPC protected six nesting attempts by placing signs or signs/ropelines around the nesting areas—the other nest was destroyed by a predator almost immediately after nest initiation. All chicks were protected by LPC's orange "Caution: Loon Chick" signs to alert boaters to the presence of loon chicks in an area of the lake.

Loons on Squam are facing multiple stressors, such as increased boating and recreational activities, increasing temperatures and storm events, increased populations of shoreline predators (raccoons, mink, etc.), and fluctuating water levels. All of these factors are common to loons on lakes throughout New Hampshire, yet declines on Squam have been more severe and protracted than those on other lakes. The factors that seem to set Squam Lake apart from other New Hampshire lakes are elevated levels of chemical contaminants and high rates of mortality from lead fishing tackle.

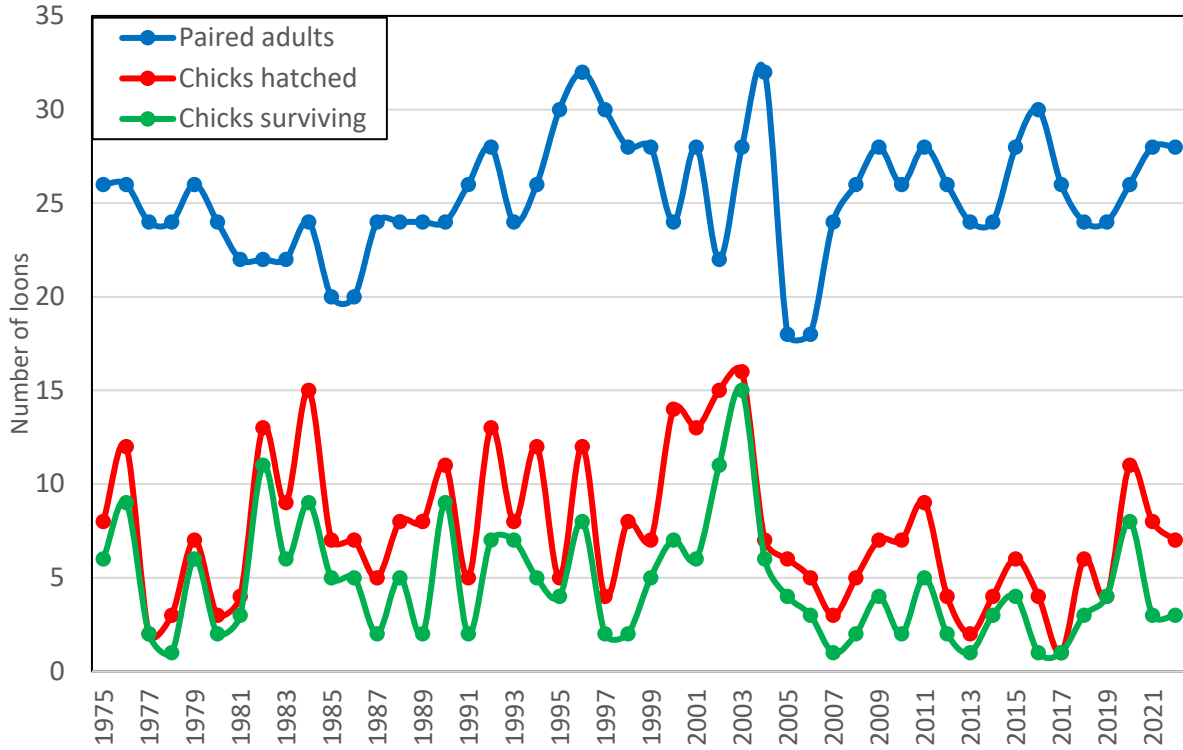


Figure 1: Squam’s loon population, 1975-2022.

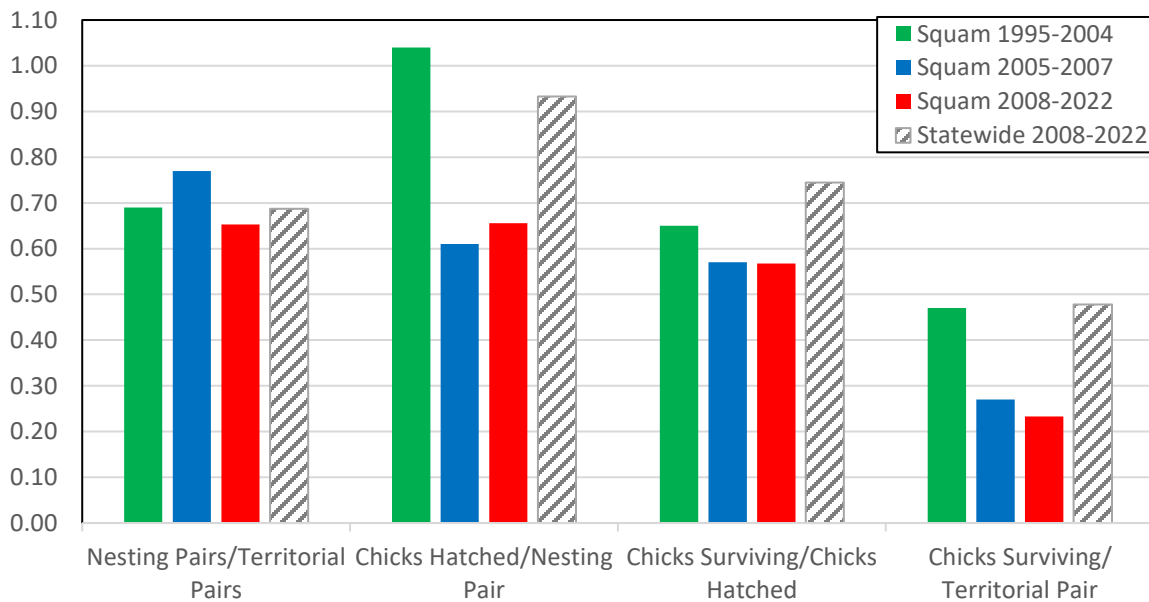


Figure 2: Productivity rates on Squam Lake before, during, and after the 2005-2007 period of decline compared with the statewide productivity rate. The statewide rate of overall productivity (chicks surviving/territorial pair) is more than twice the rate in recent years on Squam Lake.

## Contaminants in Squam Lake Loon Eggs

Inviolate eggs collected from failed Squam nests between 2005 and 2007 revealed elevated levels of a number of contaminants, including BDEs (flame retardants), PFAS (stain guards, firefighting foam), PCBs (industrial insulating/cooling agents), DDT and its breakdown product DDE and chlordane (pesticides), and dioxins and furans (PCDD/F's; byproducts of industrial processes). Levels of contaminants from Squam during 2005-2007 were **up to six times higher** than levels found in eggs collected from lakes throughout New Hampshire, Maine, and New York, as well as higher than the periods before and after these critical years on Squam. Although it is not known how these contaminants impact loons, some of the contaminants were present at levels that have been shown to affect the health and reproductive success of other bird species (Figure 4).

All of the contaminant classes tested by LPC in Squam's loon eggs may interact with each other within an organism and some may interact synergistically, i.e., the combinations of two or more contaminants may exceed the impacts of either contaminant in isolation. However, the combined effects of these contaminants in wildlife are not well understood.

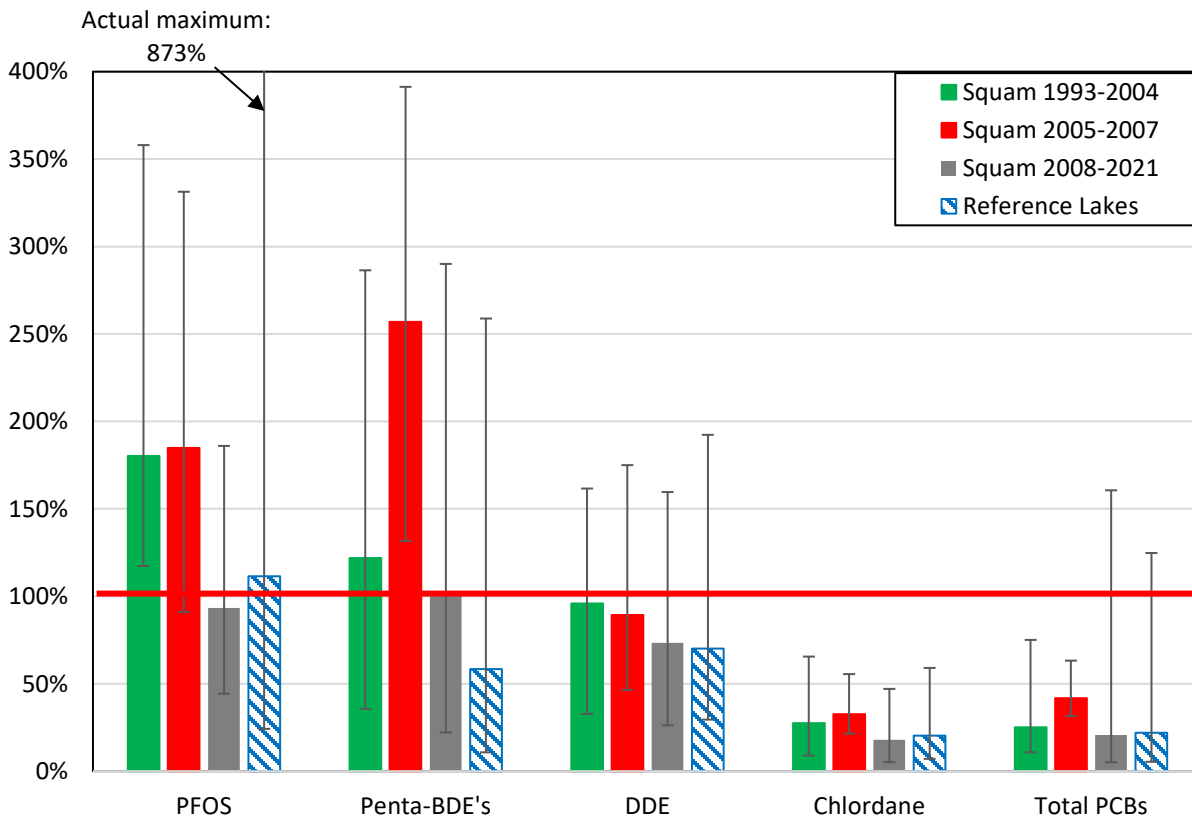


Figure 4: Contaminant levels in Squam eggs as a percentage of lowest levels causing health or reproductive effects in other bird species, as indicated by the red line. The error bars indicate the range of contaminant levels.

LPC has sent three inviable Squam loon eggs from the 2021-2022 nesting seasons for contaminant testing. An additional egg from the 2020 season is at the lab for PFAS testing. Due to new protocols in place at the laboratory as a result of avian influenza and the high volume of samples being submitted by organizations throughout North America for PFAS testing, receipt of our results has been delayed and is due in late summer. Contaminant results through 2021 indicate stable or slightly decreasing long-term trends across contaminant classes (Figures 5-7).

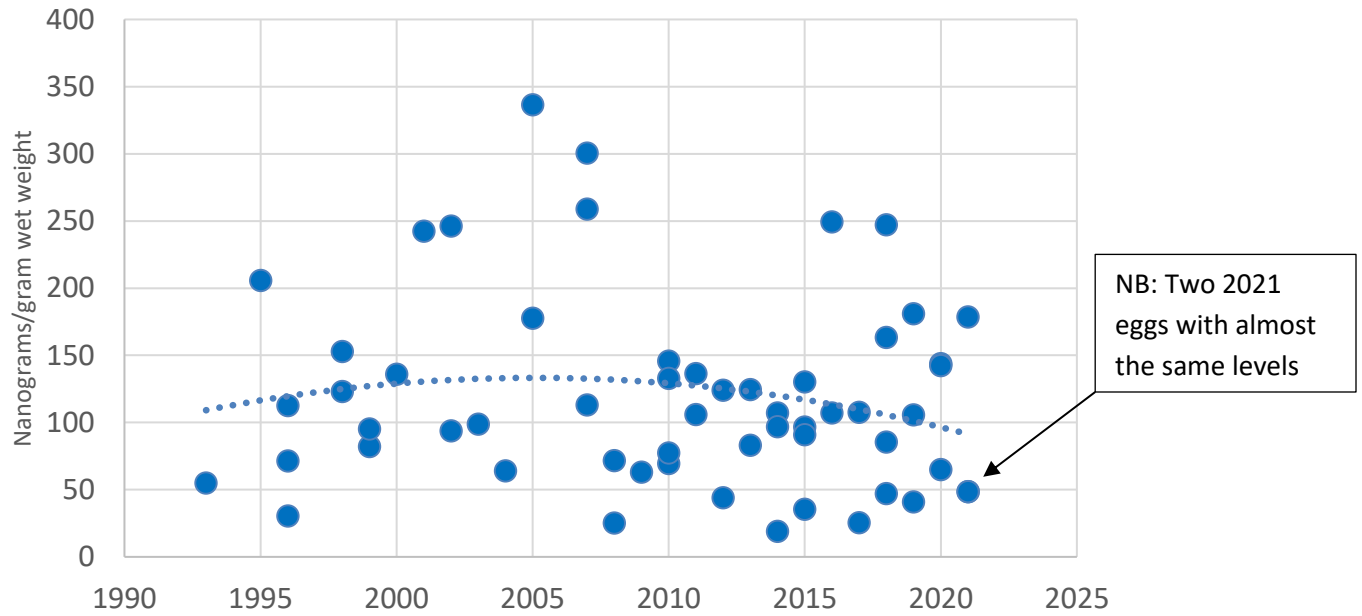
In November 2021, LPC submitted a report to New Hampshire Department of Environmental Services (NHDES) and New Hampshire Department of Fish and Game detailing results of our contaminant testing of loon eggs throughout the state (available at [www.loon.org/eggreport](http://www.loon.org/eggreport)). As a result of this report, LPC received a contract from NHDES to test PFAS in 144 archived inviable loon eggs from failed nests over the past 6 years. This represents recognition by NHDES of the importance of loon eggs as indicators of contaminant levels in aquatic ecosystems.

In an effort to better understand the potential impact of contaminants on Squam's loons, LPC is investigating loon eggshell thickness and egg size in relation to contaminant levels and productivity. Some of these contaminants may cause eggshell thinning and impact the size of bird eggs, among other impacts, and these data are being analyzed to understand if and how these contaminants may impact loon productivity. LPC is preparing to submit a paper to a peer-reviewed journal reporting on contaminant levels in loon eggs and potential impacts on productivity and egg integrity.

The discovery of these contaminants in Squam's loon eggs raised two important questions for LPC: 1) What are the sources of the high levels of contaminants found in Squam's loon eggs? and 2) What impacts are these contaminants having on Squam's loon population?



### BDEs (Brominated diphenyl ethers)



### Total PFAS (Per- and poly-fluorinated alkyl substances)

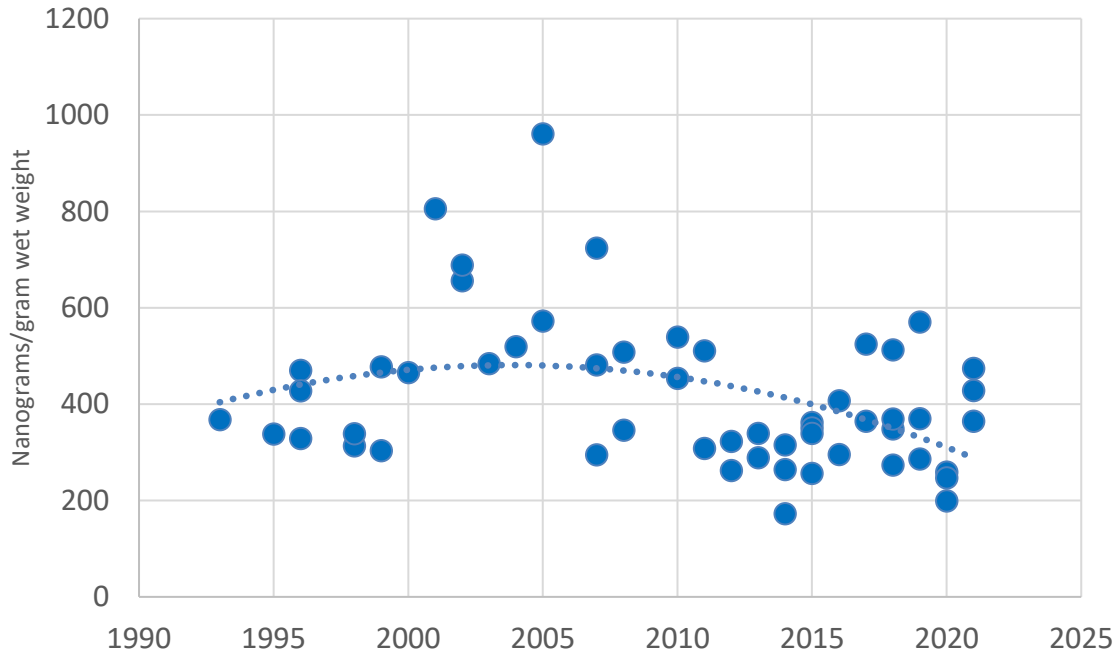
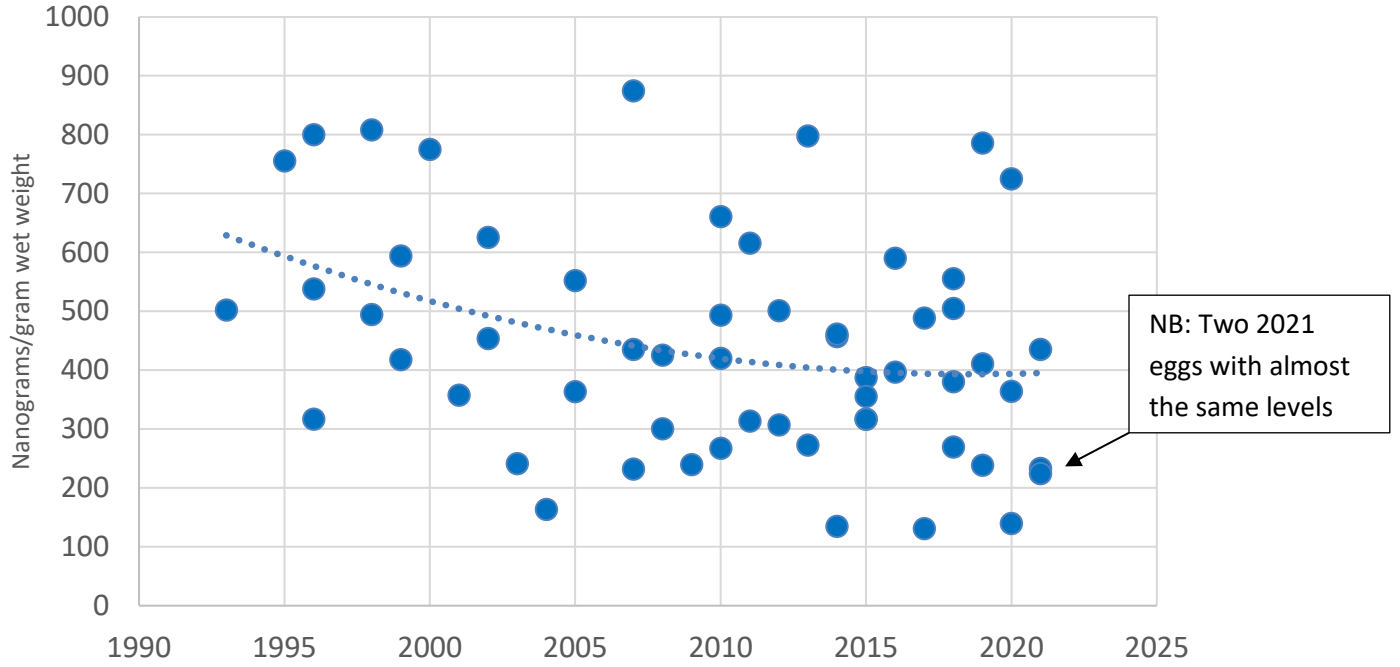


Figure 5: Trends of BDEs and PFAS in unshatched Squam loon eggs from failed nests, 1993-2021.

### Total DDE (Dichlorodiphenyldichloroethylene)



### Total Chlordane

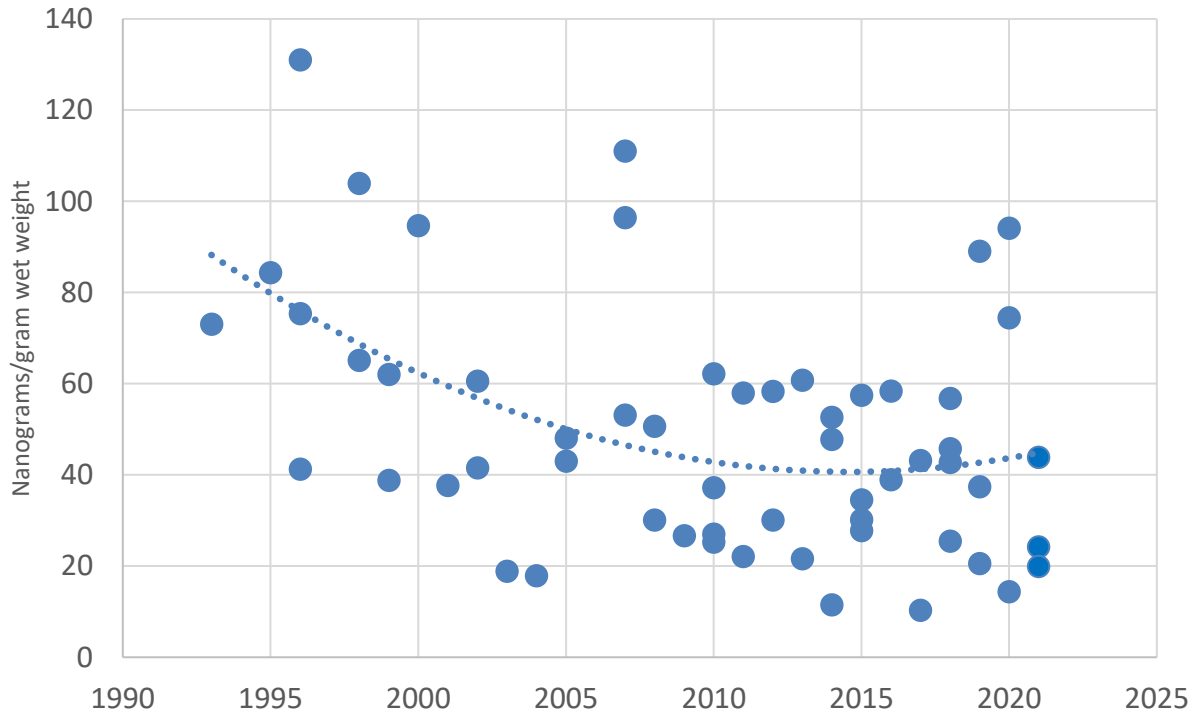


Figure 6: Trends of DDE and chlordane in unshatched Squam loon eggs from failed nests, 1993-2021.

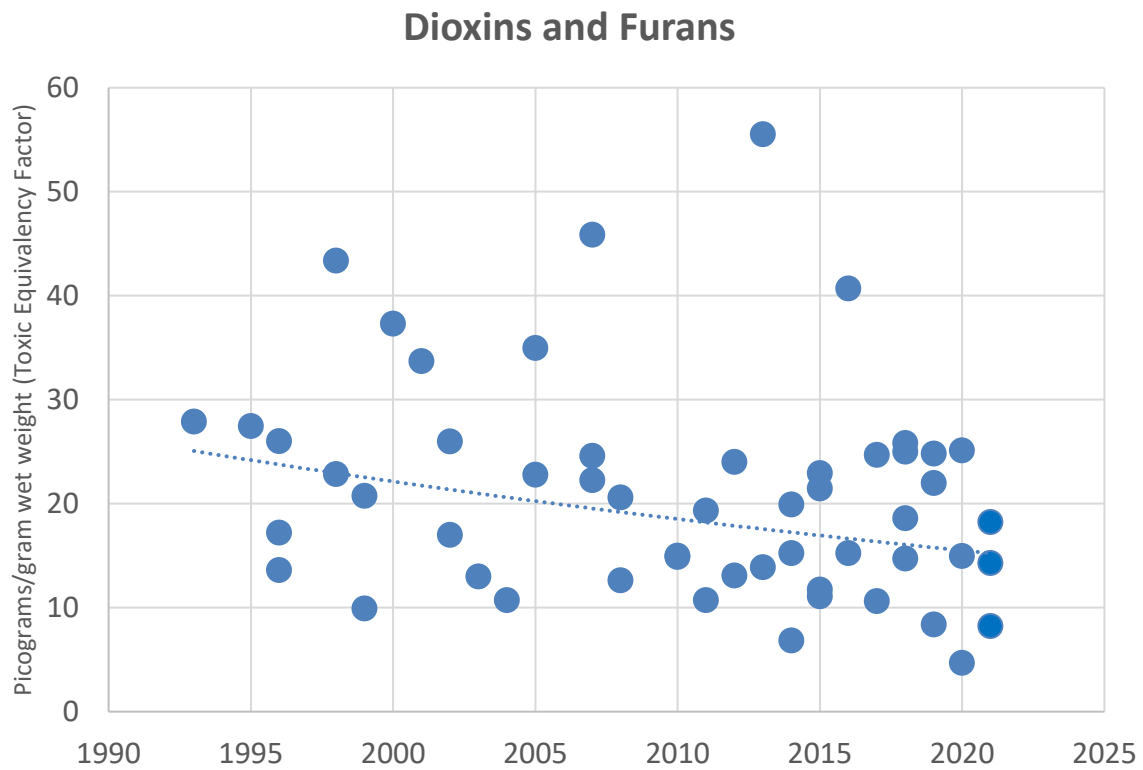
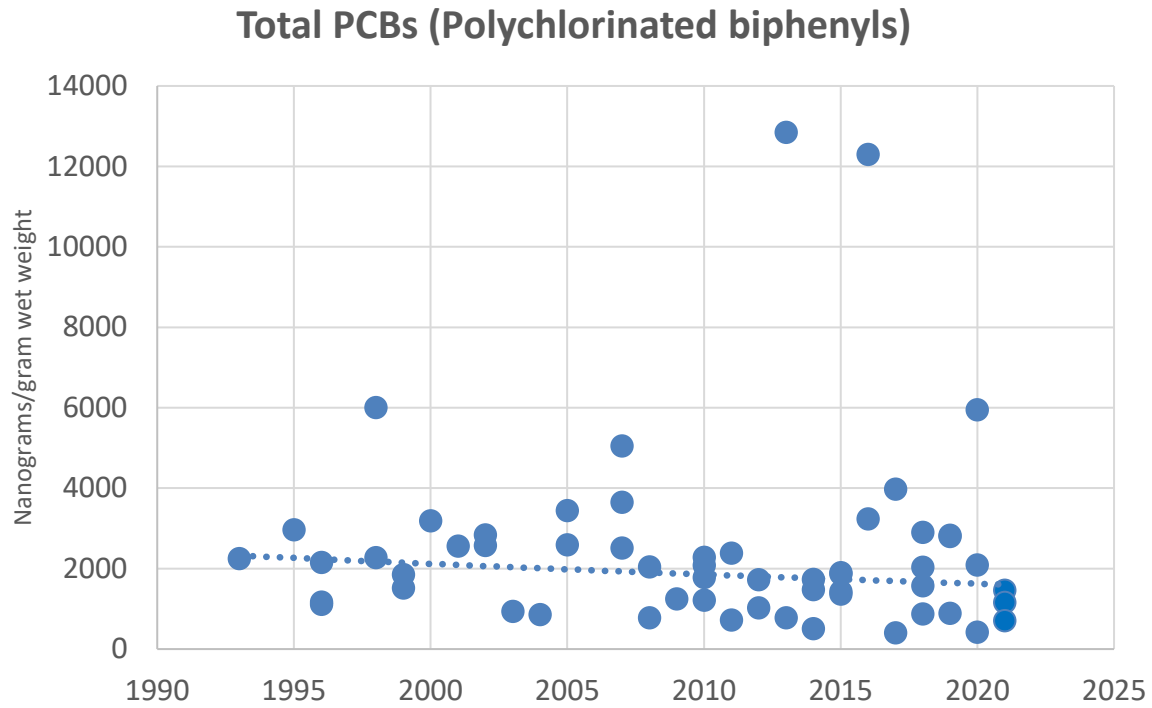


Figure 7: Trends of PCBs, dioxins, and furans in un-hatched Squam loon eggs from failed nests, 1993-2021.

## ***Hypotheses as to the Sources of Contaminants***

LPC has investigated five hypotheses to explain the high levels of contaminants present in Squam's loon eggs. These hypotheses and the evidence for or against them are listed below:

- 1) *Loons from Squam Lake acquired the contaminants while on their ocean wintering grounds.* Loon biology indicates that this would not likely be the case, and isotope testing confirmed that the nutrients (and, consequently, the contaminants) in the loon eggs came primarily from a freshwater source, not from the ocean.
- 2) *There was a change in the food web in Squam Lake, which forced loons to feed on fish at higher levels of the food web, thus exposing them to higher levels of contaminants.* Isotope testing did not reveal any change in the levels of the food web at which Squam's loons are feeding.
- 3) *The age structure of Squam's loon population (i.e., old loons that had accumulated contaminants over their lifetimes) contributed to elevated contaminant levels in the loons.* Banding evidence does not suggest the existence of a cohort of old loons on Squam.
- 4) *Squam has a unique hydrology, holding water longer than other lakes, which allowed for the retention and build-up of contaminants.* Limited data available do not suggest that Squam's hydrology has contributed to a build-up of contaminants, but detailed analyses by hydrological experts would be needed to definitively rule out this hypothesis.
- 5) *Pollution from a diffuse source accounts for the elevated contaminant levels found in Squam loon eggs.* Data collected by LPC working collaboratively with Jeff Schloss and Bob Craycraft of University of New Hampshire Cooperative Extension does not support the hypothesis that the contaminants found in Squam's loon eggs came from a diffuse source.
- 6) *Pollution from one or more isolated sources accounts for the elevated contaminant levels found in Squam loon eggs.* An isolated source posits a single large input of contaminants into a system. Illegal dumping, accidental spill, or a leaking container of chemicals are examples of possible isolated sources. The evidence suggests that at least some of the contaminants in Squam loon eggs came from multiple isolated sources in the Squam watershed.

## ***Sources of Contaminants and Sediment Sampling***

In an effort to identify sources of the contaminants in Squam's loon eggs, LPC undertook sediment sampling from tributaries in the Squam watershed. LPC's sampling revealed three key locations of elevated contaminant levels in sediments. Contaminants at these sites exceeded levels identified by various agencies and researchers as being possibly or likely harmful to aquatic life. For further details of LPC's sediment testing and results, please see LPC's report to New Hampshire Department of Environmental Services at <http://www.loon.org/squam-lake-study.php>.

Since the discovery of these sites of contaminated sediments, LPC has been working with sediment contaminant experts to identify the extent of the contamination in these areas as a necessary first step

to identify options for remediation. This has been a difficult and complicated process, but we are currently soliciting proposals from companies for a project to obtain these data.

### ***NHDES' PCB Fish Consumption Advisory***

As a follow-up to LPC's data on PCB levels in loon eggs, crayfish, and sediments in the Squam watershed, New Hampshire Department of Environmental Services (NHDES) launched a study of PCB levels in fish from Squam Lake. The goals were to investigate another level on the food web between the contaminated sediments LPC found and the loons and to explore potential human health risks to people eating fish from Squam Lake. Loons are a key indicator species, being primarily fish eaters, and PCBs are known to biomagnify through the food web (i.e., increase successively in bacteria, invertebrates, and fish), so loons are accumulating the contaminants from the fish they eat. It is known that the nutrients (and, thus, contaminants) deposited in eggs come primarily from what the loon has been eating in the few weeks immediately prior to egg-laying. Loons are on territory for 4-6 weeks prior to egg-laying, so the contaminants in the eggs primarily came from what they were eating on Squam. Isotope tests conducted by LPC confirmed that the material in loon eggs was primarily from freshwater sources rather than the ocean. Thus, there was a potential risk to humans eating fish from Squam as well.

NHDES tests on yellow perch and smallmouth bass on Squam sampled in the fall of 2018 indicated elevated levels of PCBs in fish on Squam. In 2020, NHDES issued a fish consumption guideline for the Squam Lakes that was considerably more restrictive than the standard mercury guidelines in place throughout the state. The new guidelines for the Squam Lakes recommended limiting consumption to: for adults and children >7 years old, 1 meal per month of yellow perch and 1 meal every 4 months of smallmouth bass and other fish; for women of child-bearing age, 1 meal every 2 months of yellow perch and 1 meal every 6 months of smallmouth bass and other fish; and for children <7 years old, 1 meal every 3 months of yellow perch and 1 meal per year of smallmouth bass and other fish. Details of the new guidelines can be found at: <https://www.des.nh.gov/media/pr/2020/20200330-squam-lake-fish.htm>.

It was the decline of loons on Squam that led LPC to test unhatched loon eggs from failed nests. From there, it was a straight line to contaminants in crayfish, sediments, and fish, with implications for human health. LPC will continue to test unhatched loon eggs from failed nests on Squam and around the state to monitor contaminant levels. LPC's work to monitor contaminants in loons will provide the ultimate measure of the success of any efforts to mitigate the contaminant problem on Squam.

### ***Mortality of Squam Lake's Adult Loons***

In a positive development for Squam's loon population, no adult loons were documented to have died on Squam Lake in 2022. To date in 2023, one adult loon mortality has been collected. This loon died as a result of injuries from another loon.

Staff from Tufts University School of Veterinary Medicine, the University of New Hampshire Veterinary Diagnostic Laboratory, and Loon Preservation Committee performed necropsies on 23 adult loons from Squam Lake that were found dead between 2004 and 2023. The majority of these loons died as a result of human causes: 9 loons died as a result of ingested lead fishing tackle; 4 loons were killed by boat strikes; 1 died as a result of a gunshot wound; and 2 loons died from avian malaria.

Many more Squam Lake loons missing during this time period remain unaccounted for and are presumed to have died on their ocean wintering grounds, possibly as a result of poor body condition resulting from exposure to contaminants and other stressors on Squam.

Since the opening of the reconstructed public boat launch in 2001, the rate of mortality from lead fishing tackle on Squam Lake has increased by 72% (Figure 8) and is twice the overall statewide rate of lead mortality during the same period. Loon populations may be negatively impacted by the loss of even 0.4% of their population annually from human causes (LPC, unpubl. data; Dillingham and Fletcher 2008); and, between 2001 and 2022, Squam lost on average 1.3% of its adult loon population annually due to lead fishing tackle alone. Although it is not possible to demonstrate causation, it is worth noting that, since 2001, the number of boats counted in the Squam Lakes Association boat census, the number of fishing tournaments, and the number of boats participating in fishing tournaments have all increased.

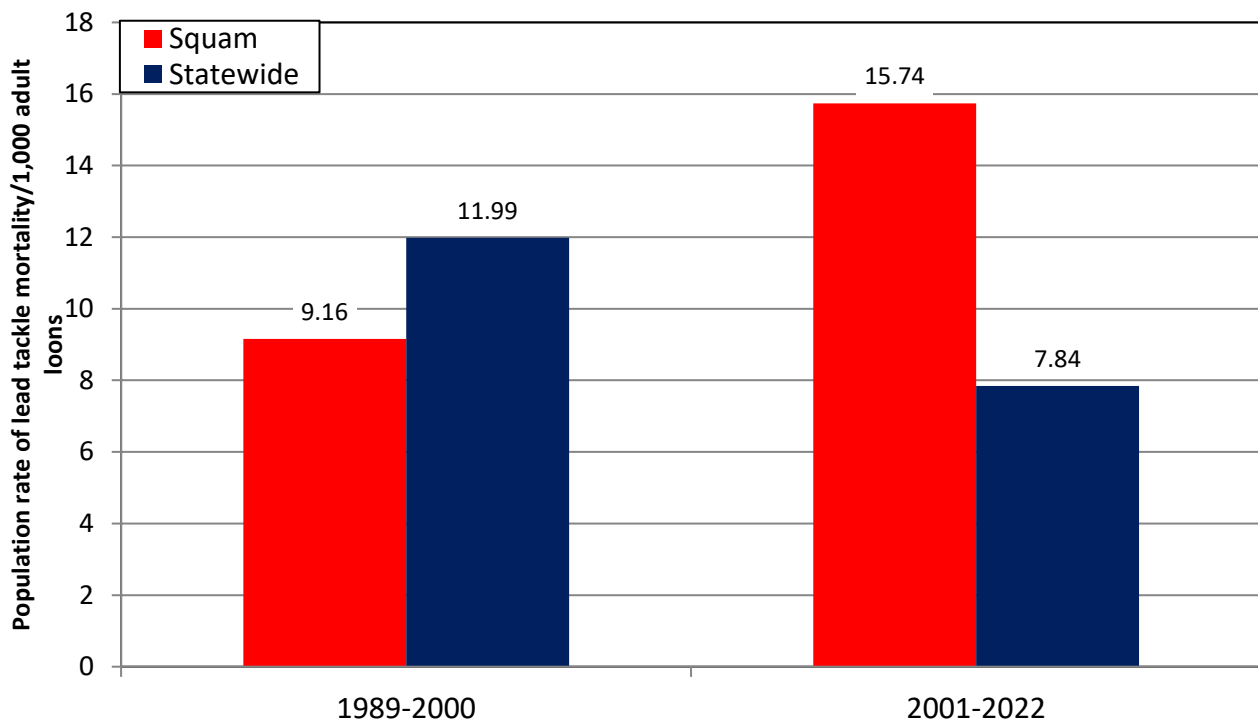


Figure 8: Population rates of lead mortality on Squam Lake vs. statewide population rates of lead mortality.

### ***Working Hypothesis to Explain the Impacts of Stressors on Squam’s Loon Population***

The discovery of high levels of contaminants in Squam’s loon eggs raised the question of what impact these contaminants had on the loon population in concert with the many other stressors facing Squam’s loon population. LPC has a working hypothesis to understand the impacts of combined stressors on Squam’s loon population. ***This is a hypothesis only and subject to change as new evidence become available.***

Like loons throughout New Hampshire, Squam's loons have been experiencing increasing stressors over time, from increased recreational pressure to increasingly hot summers and more intense precipitation events. On Squam, recreational and fishing pressure became more intense in the years following 2001, coincident with the reconstruction of the public boat launch in the same year, and mortality from lead fishing tackle increased in the same period (Figure 7). In approximately 2002, evidence suggests that there may have been an influx of contaminants into the lake from sources on tributaries flowing into Sandwich Bay and Bennett Cove, likely as a result of increased runoff. By 2004, these contaminants had worked their way up the food chain to loons. The classes of contaminants found in Squam loons concentrate in fat reserves and may become mobilized as fat reserves are used. These contaminants, in combination with other stressors, may have contributed to poor body condition and the deaths of many of Squam's loons during the winter of 2004/2005 as their fat reserves were metabolized for the fall molt and migration. The loon pairs that survived to reproduce in subsequent years deposited elevated levels of contaminants into their eggs, possibly contributing to poor productivity. An independent assessment by consultant Lori Siegel using a systems dynamics model with data from LPC and other sources likewise identified contaminants as likely factors in the declines in loon survival and breeding success.

By 2008, some of the contaminants seem to have flushed through the Squam system, as evidenced by a decline in levels of some contaminants in Squam's loon eggs in subsequent years. However, evidence suggests that factors including ongoing high levels of adult mortality from lead fishing tackle and other anthropogenic causes continue to undermine the recovery of Squam's loon population. The loss of so many established, experienced adult loons led to the immigration of new loons to fill vacant territories. These loons are intruding into territories, driving remaining established loons out of their territories, disrupting nesting, and, in some cases, killing chicks. While these behaviors are typical for territorial disputes, the effects on Squam are amplified due to **high human-caused adult mortality** and the resultant territorial vacancies. Loons have evolved to thrive in a stable environment and stable social structure, and Squam's loons have had neither since 2001.

Continued monitoring of contaminant levels in loon eggs is warranted, given the discovery of contaminated sediments in the watershed. The continuing presence of contaminants in Squam loon eggs suggests the likely ongoing availability of contaminants to the Squam food web. LPC will continue to monitor contaminant levels in inviable loon eggs from failed nests on Squam.

The critical factor to restore a healthy population of loons to Squam Lake seems to be **keeping adult loons alive** to stabilize the social structure. The stability of loon social structure can have a major impact on loon reproductive success. Increasing the use of non-lead fishing tackle and educating lake users about the dangers of lead and the need to boat carefully around loons will help reduce the threat of human-caused mortalities to loons. If adult mortality could be reduced and the social structure could stabilize, there is reason to hope that productivity on the lake would improve, as the disruptions Squam loons are currently facing during nesting and chick-rearing may abate.

The relative calm in the loon social structure that seems to have contributed to a successful 2020 breeding season did not continue in 2021 or 2022. The death of the Perch Island female by a boat strike in 2020 and the death of the Perch Island male in 2021 destabilized much of the western part of the lake. The result of this instability was much more fighting among loons on Squam in 2021 and 2022, with territorial intrusions causing the death of three chicks and possibly contributing to the loss

of two other chicks and at least two (possibly three) nest failures between the two years. The degree of intrusions and fighting among Squam's loons in 2021-2022 provided dramatic evidence of the effects of adult mortality on the wider Squam loon population. With the 2023 breeding season still in progress, an assessment of this year's breeding season will be provided in the end-of-season report.

The evidence from the decline of loons on Squam Lake and an earlier decline on Lake Umbagog suggests that recovery will take time. LPC has learned from both of these events that perturbations to the system cast a long shadow over a loon population, which would be expected in a long-lived bird like a loon. While the causes of the declines of the loon population on Umbagog are unknown and the adult population there has not recovered, in the last four years, productivity of the remaining pairs of loons on Umbagog has finally begun to improve. As would be expected in a complex biological system, the experience of loons on Umbagog and Squam are not directly comparable, but the example of Umbagog suggests that, with time and supportive management, Squam's loons can recover. And on Squam, we understand much better the impacts of human activities on the decline of the loon population and how we can work together to restore the loon population.

## ***Remediation***

LPC is working to address the challenges loons are facing on Squam and restore a healthy population of loons to the lake in the following ways:

- 1) *Limiting mortality from lead fishing tackle:* LPC's data was the impetus for legislation to increase protections of loons from lead fishing tackle. Mortality from lead fishing tackle has likely contributed to the social chaos and resultant low productivity on the lake. LPC published a paper detailing our lead tackle mortality data and the population-level effects of lead tackle mortality on New Hampshire's loon population in the peer-reviewed *Journal of Wildlife Management*, an important step to buttress New Hampshire's lead legislation against efforts to repeal the bill, as well as to communicate our findings to the scientific community.

Educating the public about the dangers of lead to loons forms a major part of all of LPC's outreach activities on and around Squam Lake. The evidence suggests that the most important thing we can do right now to restore a healthy population of loons on Squam is to ***keep adult loons alive***. Protecting loons from lead fishing tackle is a critical component of that effort. LPC's Lead Tackle Buyback program, in partnership with the New Hampshire Department of Fish and Game, has expanded to fifteen retail shops throughout New Hampshire, including Squam Boat Livery. Rockywold-Deephaven Camps and Squam Lakes Association also serve as lead tackle collection points. To date, the lead tackle buyback program has removed over 45,000 pieces of lead tackle as a potential threat to loons and other wildlife. For more information on the program, please visit [www.loonsafe.org](http://www.loonsafe.org).

- 2) *Increasing reproductive success:*

- **Management:** LPC is continuing intensive management on Squam Lake to increase the reproductive success of loons, including the provision of artificial nesting rafts where



appropriate, roping and signing loon nesting areas, and the placement of “Caution: Loon Chick” signs to alert boaters to the presence of loon chicks.

- **Investigating causes of nest failures:** Cameras placed at loon nests help us understand the causes of nest failures to help guide future management.
  - **Outreach:** Educating the public about the needs of loons and the importance of maintaining a respectful distance from loons and loon nests forms an important part of LPC’s outreach activities. The Squam Lake Loon Initiative has resulted in dramatically increased outreach to the Squam Lake community and visitors through weekly presentations at the Rockywold-Deephaven Camps on Squam Lake, as well as twice-weekly loon cruises on the lake in partnership with the Squam Lakes Natural Science Center. In addition to these regular talks, LPC gives other presentations in the Squam area. Tiffany Grade’s e-newsletters continue to provide updates on Squam’s loons to over 400 people during the summer.
  - **Protecting loon families:** LPC biologists are a near-constant presence on the lake during the loon breeding season, and LPC continues to collaborate with the Squam Lakes Association (SLA) to protect loon families. LPC trains the Lakes Region Conservation Corps (LRCC) interns working for the SLA each year on how to promote responsible behavior around loons and loon families and LRCC interns assist with placing signs around loon nesting and brooding areas.
  - **Mitigating effects of climate change:** Covers on loon nesting rafts help protect loons from avian predators and provide shade for incubating loons, which can easily overheat. In addition, LPC has deployed shade fabric on raft covers to help loons cope with a warmer climate. LPC’s nest cameras also help us understand the impacts of climate change on nesting loons by allowing LPC to assess nest attendance during heat waves and observe behavioral signs of heat stress in incubating loons.
- 3) *Identifying levels and sources of contaminants:* LPC continues to investigate contaminants as one of many possible contributors to both reduced survival and reduced breeding success of Squam’s loons and to identify solutions to the complex issue of contaminated sediments in the Squam watershed. LPC is collaborating with the SLA to solicit proposals from consultants to measure the extent of the contamination at known sites. This would establish the extent of the contamination problem in these areas and guide plans for mitigation efforts.

In bringing the issue of contamination in the Squam watershed to light and leading this collaboration of state and federal agencies, a university, and non-profit organizations, LPC is working to ensure that these issues are addressed to safeguard the health of Squam and all its inhabitants. As indicators of the health of the aquatic environment, Squam’s loons originally alerted us to the problem of contamination on Squam Lake, and they will continue to serve as sensitive barometers of contamination in the watershed. As funding permits, LPC will continue to test inviable loon eggs from failed nests on Squam for these contaminants. Results of these tests will provide the ultimate measure of our success to address the issue of contaminants on

Squam Lake. LPC will continue to take a leadership role in this collaborative effort to ensure the health of the Squam ecosystem and the wildlife and people that call Squam home.

### *Next Steps*

The Squam Lake Loon Initiative has already provided critical baseline data on contaminants and other environmental stressors on loons, which will be invaluable to assess changes in, and effects of, contaminants and pathogens in the future. The collaboration of researchers formed as a result of the decline of loons on Squam Lake is unprecedented, and the testing being done on loon samples is the most comprehensive undertaken anywhere to date. LPC's research is the only systematic testing in the state for contaminants in a species at or near the top of aquatic food webs, like loons. Given that the contaminants for which LPC is testing biomagnify and bioaccumulate in the food web, contaminant levels in loons are important indicators of the health of aquatic ecosystems. LPC's testing of inviable Squam Lake loon eggs has shown that Squam's loons are carrying a contaminant body burden that includes not just DDT and PCBs but flame retardants (BDEs) and stain repellants (PFAS), among other chemicals (Figure 4), and LPC remains concerned about the overall contaminant body burden of Squam's loons. LPC's sediment testing identified potential sources for DDT, PCB's, and dioxins/furans; but, to date, we have not identified locations for these other contaminants. LPC continues to advocate for testing that covers the full scope of contaminants of concern revealed by our efforts, including dioxins/furans, dioxin-like PCBs, BDEs, and PFAS.

The SLLI has resulted in an accurate record of loon populations and productivity on Squam Lake, including causes of nest failures; the quick response to sick or injured loons to increase chances of survival of these loons; an increased number of banded and sampled loons on Squam to increase our knowledge of the survival and breeding success of known individuals, and the relationship of survival and breeding success with contaminant burdens; a model to elucidate the effects of multiple co-occurring stressors on the survival and breeding success of loons; and protection and outreach to recover and maintain the Squam Lake loon population. We anticipate that this initiative will help avoid future declines of loons on Squam and on other lakes; continue to investigate the much larger, more systemic problem on Squam indicated by the decline of loons; inform other initiatives such as LPC's New Hampshire Loon Recovery Plan and SLA's Squam watershed plan; and help LPC and others make more informed decisions to protect Squam's loons, other wildlife, and the ecological integrity of Squam Lake, as well as lakes throughout New Hampshire.

Objectives for the Squam Lake Loon Initiative in 2023-2024 include:

1. Testing inviable loon eggs from failed Squam nests in 2023 to monitor current contaminant levels and trends;
2. Submitting a paper for a peer-reviewed journal on Squam and statewide egg contaminant results;
3. Analyzing eggshell thickness measurements with contaminant and productivity data;
4. Inspecting data from nest cameras to investigate disturbances at nests and causes of nest failures;
5. Continuing to advocate for comprehensive testing of samples while working with New Hampshire Department of Environmental Services, US Environmental Protection Agency, and Squam Lakes Association to determine the extent of contaminated sediments and facilitate remediation of potential sources;
6. Continuing intensive monitoring, management, and outreach to support Squam's loons.

Squam Lake will continue to play a leading role in advancing our understanding of loons and their challenges in New Hampshire, and the groundbreaking research being conducted on Squam Lake will continue to inform LPC's efforts to preserve loons throughout New Hampshire.

### ***Acknowledgements***

LPC would like to thank our many collaborators and partners who have contributed technical expertise or opportunities for outreach to the Squam Lake Loon Initiative over the past year:

- LPC's Technical Committee: Kristen Begor (LPC Board), Sean Flint (US Fish and Wildlife Service), Dave Govatski (LPC Board), Sandi Houghton (NH Fish and Game), Ralph Kirshner (LPC Board, retired), Anne Kuhn (US Environmental Protection Agency), Chris Martin (NH Audubon), Brian Reilly (LPC Board), Sara Steiner (NH Department of Environmental Services), Brenda Stowe (LPC Board), Bob Varney (LPC Board)
- New Hampshire Department of Environmental Services: Jonathan Petali, Ted Diers, Ken Edwardson, David Neils, Tracie Sales
- New Hampshire Veterinary Diagnostic Laboratory: Inga Sidor, David Needle
- Rockywold-Deephaven Camps
- Squam Lakes Association and Lakes Region Conservation Corps
- Squam Lakes Natural Science Center
- Tufts University Cummings School of Veterinary Medicine: Mark Pokras

LPC would also like to thank the many people, foundations, and efforts that have made our work to understand and reverse the declines of loons on Squam Lake possible.

The Loon Preservation Committee is a not-for-profit 501(c)3 and donations to fund our work to protect loons are tax deductible as allowed by law. To donate to the Squam Lake Loon Initiative, please visit <https://loon.org/donate/>.

### ***Literature cited***

Canadian Council of Ministers of the Environment (CCME). 2001. Canadian sediment quality guidelines for the protection of aquatic life. Updated. In: Canadian environmental quality guidelines, 1999, Canadian Council of Ministers of the Environment, Winnipeg.

Dillingham, P.W. and D. Fletcher. 2008. Estimating the ability of birds to sustain additional human-caused mortalities using a simple decision rule and allometric relationships. *Biological Conservation* 141:1783-1792.

MacDonald, D. D., C. G. Ingersoll, T. A. Berger. 2000. Development and evaluation of consensus-based sediment quality guidelines for freshwater ecosystems. *Archives of Environmental Contamination and Toxicology* 39:20-31.

U.S. Department of the Interior. 1998. Guidelines for interpretation of the biological effects of selected constituents in biota, water, and sediment: DDT. National Irrigation Water Quality Program Information Report No. 3.